



WARRIORS IN TUNE

December 2019

Website: <http://www.washingtonbands.org>

<https://www.facebook.com/WashingtonHighSchoolBandsSiouxFallsSd>

UPCOMING EVENTS:

December:

9: Band Booster

Meeting – 7 PM

10: Fall/Winter Concert –

Freshman, Varsity,
Concert & Symphonic
Bands – 7 PM – WHS
Auditorium

January:

13: Band Booster

Meeting – 7 pm

18: All State Band

Auditions – LHS

Coming up: Watch for info about the Augustana Feb 4th Solo & Ensemble contest.



Director Notes:

The holiday season signals the beginning of a very busy time for the Washington Bands. During this season, the band program tries to focus on sharing our passion for music with as many audiences as possible. The most prominent thing that will happen this month is our Winter Concert which will be held in the WHS Auditorium on Tuesday, December 10th at 7:00 pm. It will feature every concert band at Washington for the first time this school year. We hope many of you will join us for this concert!

While we look forward sharing our musical talents, this is also the time when many family members begin buying gifts (unless you are done already 😊). Did you know that simply getting a professional mouthpiece (and ligature for clarinets and saxophones) can make a DRASTIC difference in your student's tone and ability to play in tune? Several students are astounded by the ease with which these mouthpieces play and the most common comment is, "Is it so much easier to play! I feel like I am not fighting with my instrument for the first time!" While this can be a moderately expensive investment, it pays huge dividends and is less expensive than a new instrument. (Ligatures for clarinets and saxophones can also make a big difference for a minimal investment.) There are also a number of things that make great gifts and stocking stuffers for your student. Here are some ideas, some instrument-specific and others not:

- Tuner (There are many small, inexpensive ones on the market.)
- Metronome (Also, many small inexpensive ones from which to choose.)
- Tuner/Metronome combinations are also available and are fairly inexpensive.
- Sticks & mallets, and a bag to store and protect them. (One pair each: snare, mallets, timpani)
- Valve oil, slide cream, polishing cloths, brushes for cleaning instrument and mouthpieces
- Music stand
- Brass mutes (straight or cup are most commonly used)
- New mouthpiece/ligature (consult with your student's director or private teacher for suggestions)
- New cleaning swabs, a padsaver, or polishing cloths for their instrument
- Music – solos, books, ensembles for lessons and for fun
- Private lessons (How about a few to help get ready for contest and All-State auditions?)
- Tickets to a concert

If you'd like advice on mouthpieces, sticks, method books, and other musical gifts for any students that you'd like to give this holiday season, please call or email one of the directors.

One final thing: Every three years, Mr. Harder and myself are able to get funding to travel to the Midwest Clinic (International Music Conference for Band) in Chicago, IL. This is the largest and most elite music educator's conference of its kind and we are extremely excited to learn from the best composers and band directors in the world. This year, the conference falls on the week prior to holiday break. Both directors will be gone from school Wednesday – Friday, December 18-20. While we will still have access to email, just know we will not be in South Dakota during this time. We have a sub coming in that is a former band director to rehearse the bands so they will still need their instruments.

Best wishes to all of you for a joyous holiday season. May this time of the year be spent with great music, family and friends, and all those you love. – Musically yours, WHS Band Directors

All-State Band Auditions are January 18th at Lincoln High School. Please make sure that Mrs. Coyne has all the registration information if you are auditioning so she can register all the students.

All-State Information Packets are available in the Band room and feature:

- Scales for Audition
- Excerpt Piece
- Example Sight reading materials.

Are you in show choir on Jan 18th? Alternate date is February 1st at Brandon Valley High School.

The Winter Concert

The Winter Concert is December 10th and will start at 7 pm. It will feature the Concert Ensembles of the Washington High School Band Program: The Freshman Band, the Varsity Band, the Concert Band, and the Symphonic Wind Ensemble. Please make sure that you have concert black attire:

LADIES - Wear a floor length black dress/skirt, black dress/skirt with black leggings or tights, or black pants with a black blouse/top with at least 1/4 length sleeves. In general, the only colors on stage are black and white that fit within these guidelines. We do this to make sure that you look your best, and are as professional looking as possible. Modesty is always the best possible when attending a formal occasion.

MEN - Wear black pants with black socks, black dress shoes, (no sneakers) black long sleeve button up shirt (or white button up shirt with black tie and black jacket). Black Jacket with a Black Shirt and White/Silver Tie is also acceptable. No White Suits.

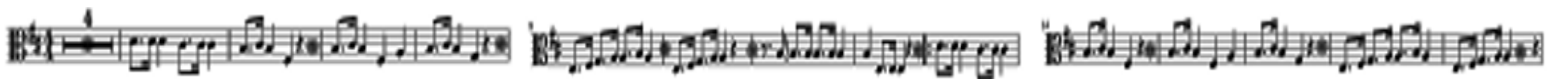
Jazz News

Thank you to all the students who participated in the Jazz Concert on November 12st. An outstanding performance by all groups! Thank you, also, to all the volunteers and to those individuals who donated pop or other items.

Congratulations again to Jill Bowie, Adam Clancy, Bridget Koch, Nicholas Levisay, Emmanuel Michael, and Lilly Roberts who performed at All City Jazz November 18th. Great job!!

Top Ten Rules - CONCERT ETTIQUETTE (for Concert Bands)

1. Refrain from talking during the performance. Wait until there is applause, between selections, or between ensembles.
2. Refrain from unwrapping candy, cough drops, etc. during the performance. Best to do at the same times as above.
3. Turn off pagers, cell phones, and watch alarms. These tend to go off at the most inappropriate times!
4. Do not wave to your student or try to get them to wave to you. Students have been instructed not to respond to audience "cues."
5. Do not take flash photography during the performance.
6. Do not move to the front with your video camera.
7. Do not leave as soon as your student's portion is over.
8. Applaud at appropriate times. Some selections have many movements - see the program and watch the conductor.
9. Do not leave the auditorium during the music. Wait until the ensemble is between selections.
10. Go to the concert expecting the best & compliment your student on his/her performance when it is over.



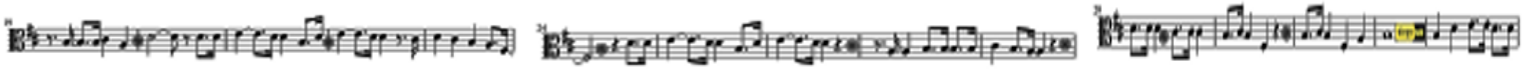
Fundraising

The FlyBoy Donuts fundraiser is ending soon – right after Thanksgiving break. Watch the newsletter and email for more information about our January fundraiser. Students, please be on the look out for emails about volunteer opportunities. These are a great way to grow your band account. (Weisser distributing fundraising brought in \$458 for 12 students who participated!) Also, remember that we have three on-going fundraisers -- HyVee Cards, Batteries and Scrip Cards. The Scrip Card program information is below:

Scrip Cards –WHS Band Boosters will order gift cards at a discount; families pay face value for the cards and the difference is an instant rebate for your students account. It only takes a few minutes to set-up your account and you will be on your way to adding to your student's account! Instructions for placing a Scrip order are available on the band website:

<http://www.washingtonbands.org/fundraising.html> - Click on the 'Learn More' button under the Shop with Scrip section.

If you have any questions regarding fundraising, please contact Alaina Lewis at 323-9622. Thanks for your support!

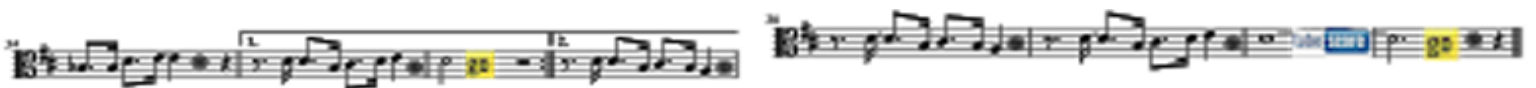


Chicken Dinner

Thank you all for making the 2019 Chicken Dinner/Silent Auction & Raffle such a great success! Over 380 dinner tickets were sold and the total profit for the event was \$4,045 – up significantly from last year. This type of success will go a long way to supporting the marching band and the students who participate.

This success was possible due to the many generous donations made by parents and businesses in the community. We also appreciate all of the Warrior band members who put together some wonderful baskets. We are so grateful for your generosity and we want to thank all those who participated in the Silent Auction and the Raffle – either through donations or purchasing. It is through these two events that result in the Chicken Dinner being one of the best fundraisers of the year.

Special gratitude to our fundraising volunteers, to those who made the evening run smoothly, and every parent and student who gave their time. And a very special thank you to Anne Jensen who coordinated this year's event. Outstanding results!!



WHS Band Hy-Vee Card On-Going Fundraiser

Hy-Vee Card **ORDERS** are due the first and third Monday of each month (Tuesday if Monday holiday).

Hy-Vee card orders (clearly label as Hy-Vee order) should be left in the designated envelope in the band room at the time your student has class or mailed/delivered to **Dawn Taborda, 2208 E. 1st Street, Sioux Falls, SD 57103** up until 8pm on due date. During summer months, all orders must be mailed/delivered to Dawn Taborda.

Hy-Vee Card **PICK-UP** is on the Thursday of the order week (Tuesday on Thanksgiving week).

Hy-Vee cards can be picked up from 6:30 – 7:00 PM at **616 N. Leadale Ave, Sioux Falls, SD 57103**. If you will be unable to pick up your order at this time contact me at **321-0607 (cell)** or email me at **dawnmomx4@aol.com** to arrange another time. Pick-up will be at the school if a Band Concert or band event is occurring on the scheduled pick-up night.

Hy-Vee Cards will also be available for purchase at Band Booster meetings, Band Concerts and other band events.

WHS BAND HY-VEE CARD ORDER FORM

Date _____ Student Name _____

Parent/Guardian Name _____

Phone # _____ Email address: _____

*Payment must accompany the order blank, **Checks only please.**

*Make checks **payable to WHS band.**

Select dollar amount you wish to purchase (\$105, \$210, \$420, \$525, \$630, \$840 or \$1050),
fill in denominations desired and record check #

	Amount ordered	\$10	\$25	\$50	\$100	Check #
Hy-Vee	Total due \$105 (You will get \$105 in Hy-Vee cards + \$5 into student account)					
Hy-Vee	Total due \$210 (You will get \$210 in Hy-Vee cards + \$10 into student account)					
Hy-Vee	Total due \$420 (You will get \$420 in Hy-Vee cards + \$20 into student account)					
Hy-Vee	Total due \$525 (You will get \$525 in Hy-Vee cards + \$25 into student account)					
Hy-Vee	Total due \$630 (You will get \$630 in Hy-Vee cards + \$30 into student account)					
Hy-Vee	Total due \$840 (You will get \$840 in Hy-Vee cards + \$40 into student account)					
Hy-Vee	Total due \$1050 (You will get \$1050 in Hy-Vee cards + \$50 into student account)					